

MEMO



BK series

平型带肋吸盘(柔软扁平型)

Flat ribbed suction cup (soft and flat type)



产品特点

Features

- 经过特殊设计，能保证吸盘在极限情况下能够吸附袋口；
- 唇边薄，吸附软型工件密封性强，吸取工件时，工件不易变形；
- 特殊的肋槽设计，亦适用于吸附粗糙表面；
- Specially designed to ensure that the suction cup can absorb the bag mouth under extreme conditions;
- The lip is thin, and the suction soft work piece has strong sealing performance. When the work piece is sucked, the work piece is not easy to be deformed;
- Special rib groove design, also suitable for adsorbing rough surfaces;

适用事例

Applicable examples

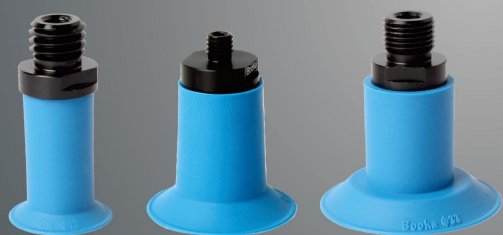
- 塑料袋的开袋（开口）动作、包装软袋、软薄板、金属软板、粗糙表面工件
- Plastic bag opening (opening) action, packaging soft bags, soft sheets, metal soft plates, rough surface workpieces

BK series

平型带肋吸盘(柔软扁平型)

Flat ribbed suction cup (soft and flat type)

BK



型号表示方法 Model representation

BK 26 S - 18M

• 盘径大小
Disk diameter

代码 code	直径 Diameter
18	Φ18mm
26	Φ26mm
33	Φ33mm

• 材质
Material

代码 code	材料/颜色 Material/color
S	硅胶/蓝 Silicone/Blue
LH	无痕/黑 (红色记号) No trace/black (red mark)

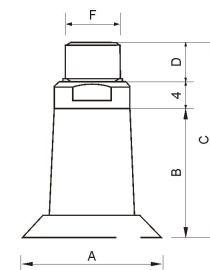
• N/S为常规材质，有痕即黑，其他材质
为特殊材质，起订量：100pcs
• LH is a standard material, black is
always available, other materials are
specialMaterial MOQ: 100pcs

• 选配接头
Disk diameter

代码 code	螺纹 Thread
无	接头无附塞型 No attachment type
M5	M5X0.8外螺纹 M5X0.8 external thread
18M	G1/8外螺纹 G1/8 external thread



尺寸图表 DIMENSIONAL CHART



Φ18-Φ33

订购代号 Order code				参数 Parameter						
① 吸盘类型 Suction cup type	② 吸盘代号 Suction cup code	③ 材质 Material	④ 选配接头 Optional connector	A	B	C	D	E	F	型号 Model
BK	18	S LH	M5 18M	18	24	32.5	4.5		M5	BK 18 ③ -M5
	26			26						BK 26 ③ -M5
	33			33						BK 33 ③ -M5
	18			18	24	34.5	6.5		G1/8	BK 18 ③ -18M
	26			26						BK 26 ③ -18M
	33			33						BK 33 ③ -18M